

Packaged Cooling Tower Basins

Project: Sun Microsystems Data Center Cooling Towers, Broomfield, Colorado



Cooling tower coatings need to withstand extreme environments, including immersion in water, exposure to corrosive chemicals and temperature extremes.

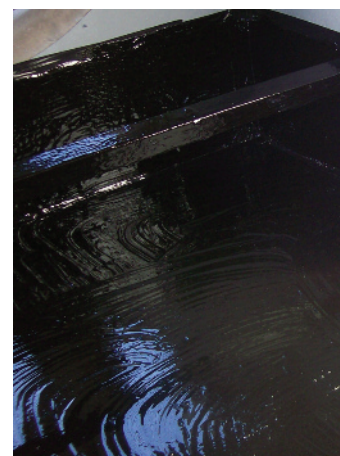
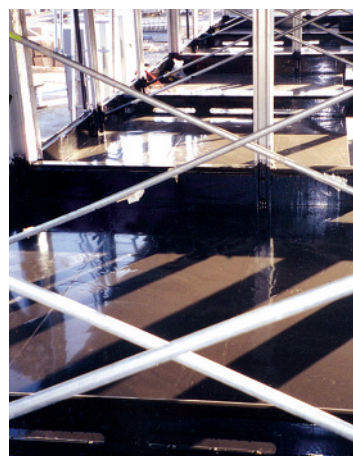
The Sun Microsystems center in Broomfield, Colorado, houses thousands of square feet of temperature sensitive servers and other computer equipment. The building systems need to be failsafe to protect this high tech infrastructure. The building owner chose CIM to protect the new cooling tower basins.

Cooling towers contain oxygenated low pH water, which can quickly break down the galvanized coating, allowing the basin to rust. CIM provides long term protection against corrosion in this tough environment.

In order to meet the owner's long term expectations, the contractor applied 60 mils of CIM 1000 directly to the galvanized basins in the cooling towers. CIM 1000 was applied in one application, and because the product cures quickly the towers were put back into service after 24 hours.

Update

11 years after application, there are no signs of coating disintegration, no underlying corrosion and no leaks.



Keeping Liquids Where They Belong



**C.I.M.
Industries
Inc.**

A Chase Corporation Company

Published data and specifications subject to change without notice.

www.cimindustries.com
23 Elm Street
Peterborough, NH 03458 USA

Tel 603.924.9481
800.543.3458
Fax 603.924.9482



CIM High Performance Coatings and Linings

Cost-Effective Solutions to a Broad Range of Liquid Containment Problems

For more than 40 years C.I.M. Industries has led the liquid storage and containment industry with a product line that delivers long-term solutions to virtually every containment need.

The entire CIM product line offers numerous benefits to our customers. CIM coatings permanently adhere to a variety of properly prepared substrates including concrete, steel, glass, wood, earth, and more. CIM is quickly applied by spray, squeegee, or roller. Cure-time, which is typically 24-hours, results in minimal facility downtime. The final product, a resilient elastomeric coating, withstands substrate movement and environmental extremes. Products are also UL approved, meet tough VOC regulations and are ANSI/NSF 61 approved for potable water contact. Each of our products has been formulated and tested for use in specific applications.

No matter how demanding the containment application, from hazardous waste to potable water, CIM offers a product to meet the challenge and deliver cost effective, long-lasting results.

Please contact C.I.M. Industries for the CIM Representative in your area.

Potable Water Facilities

Chlorine Contact Chambers, Clearwells, Clarifiers, Filtration Systems, Potable Water Tanks/Reservoirs, Pump Stations, Sedimentation Basins, Water Softeners, Flocculation Basins, Filter Beds

Wastewater Systems

Aeration Basins, Clarifiers, Digesters, Equalization Basins, Lift Stations, Lagoons, Pump Stations, Sedimentation Basins, Sludge Tanks

Chemical Containment

Tank Farm Containment, Collection/Catch Basins, Drainage Ditches, Paper Mill Tailings and Effluent Ponds, Chemical Feed Systems, Primary/Secondary Chemical Containment

Waterproofing, Decks and Pavement

Below Grade, Bridge Decks, Planter Boxes, ponds, Roofs, Tanks, Waterscapes, Joint and Crack Repair, Pedestrian and Parking Decks, Between Slab Waterproofing

Water Features

Interior and Exterior Fountains, Waterfalls, Reflecting Pools, Decorative Ponds and Fountains, Fish Ponds, Planter Boxes

Cooling Tower Systems

Distribution Decks, Collection Basins, Ice Storage Tanks, Chilled Water Tanks, Field Erected Towers, Packaged Towers, Chiller Plants

Corrosion Protection

Steel, Concrete, Marine Environment

Roofing

Plywood, Concrete, Metal, Insulation Board, Foam Insulation, Vents, Ventilators, Built-up Roofing

Other Uses

Methane Barrier, Helipads, Hatcheries, Silos, Joint Sealing, Repairing Other Liner Failures

Keeping Liquids Where They Belong



www.cimindustries.com

23 Elm Street

Peterborough, NH 03458 USA

Tel 603.924.9481

800.543.3458

Fax 603.924.9482