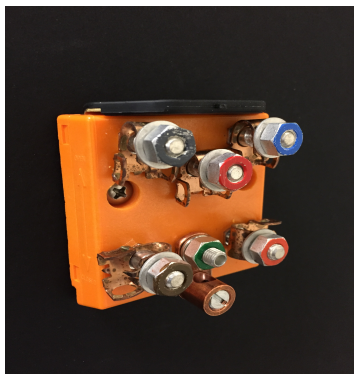


## Isolating Ground Switch—Test Station for Utility Marker Posts, Pedestals, Cabinets, Handholes, Vaults, Enclosures

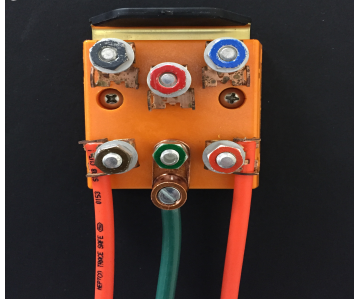


Isolating ground plate provides easy access for locating technician; no need to remove bonding and grounding harnesses. Made from tin-plated brass components and engineering-grade thermoplastic.

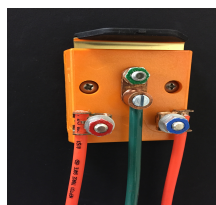
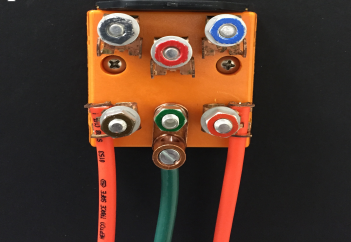
### Features

- Prevents unattached bonding and grounding harnesses, loose bonds, and lost nuts.
- Saves time for locating—no need to remove connections to isolate and reattach connections.
- Accepts #6–#24 AWG wires.

1. Bonding harnesses and ground connected



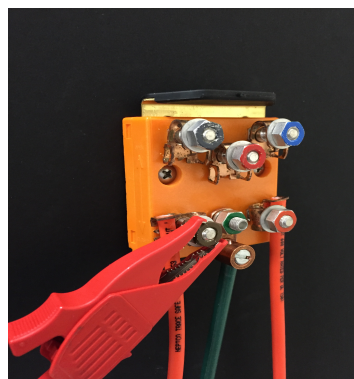
2. Place thumb under isolation lever on top and move upward for isolated position



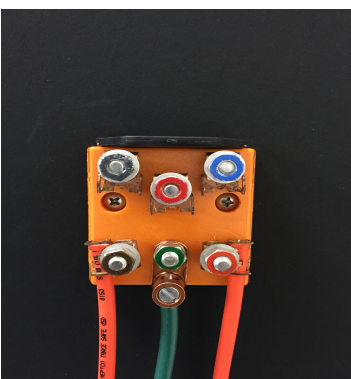
TS19-IS-2 Comes standard with one **blue**, one **red** and one **green** color coded nut.



TS19-IS-5 comes standard with one **blue**, one **orange**, one **brown**, one **slate**, one **green**, and one **red** color-coded nut. .



3 Place locating transmitter clip on terminal, for a direct isolated connection to cable for locating.



4 When locating is complete, push down on lever to ground bonding harnesses.

Also available are our gel filled impact resistant no strip polycarbonate connectors for splicing TRACE-SAFE wire, end to end or main line to lateral.

