

Water Blocking Connectors for TRACE-SAFE Utility Locating System

Description:

No strip, impact resistant polycarbonate connectors for splicing TRACE-SAFE wire, end to end or main line to lateral. Filled with silicone based water blocking compound. Fast and easy use, requires no special tools, any adjustable slip joint pliers will work.

Product Details

Properties

- | | |
|-----------------------------------|---|
| • Material: | Clear, UV resistant polycarbonate |
| • Dimensions: | Length 2.73" x Width .376" x .834" high (69.4 mm x 18.7 mm x 21.2 mm) |
| • Contains inert grease: | Temperature range -40°F to 400 °F (-40 °C to 204 °C) |
| • Adapts to wires sizes: | From 6 –12 AWG (non Trace-Safe) |
| • Multiple application situations | Includes accessories to allow working with smaller AWG wire and plugs to prevent water ingress through unused ports |

Features & Benefits

Properties

- | | |
|--|--|
| • Fast, easy assembly | • Snaps closed with locking pliers |
| | • No need to strip the wire |
| • See through | • Clear polycarbonate |
| • Positive locking feature | • Hook and window provides visual and audible indication that connector is closed |
| • Pull out resistance | • 60 lbs. to lose continuity |
| | • With overhand loop for strain relief RT180x = 400 lbs. + and TST60x = 200 lbs. + |
| • Complies with UL tests for underground wire connectors | • UL486 –2003 tests A, B, C, D and G submersion, temperature and impact tests |
| | • UL1581 UV and Sunlight Resistant (UL QMTT2.73402) |

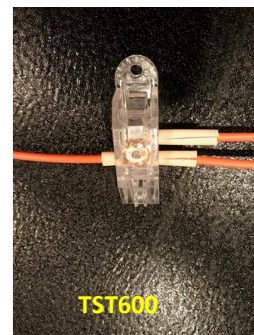
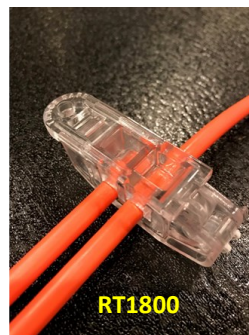
Disclaimer: TRACE-SAFE® water blocking tracer wire performance is not guaranteed if installed without the use of TRACE-SAFE® connectors.



End to End Splice



Locate Connector



Main Line to Lateral

TS-UBC
66956



TS-ULC
66957

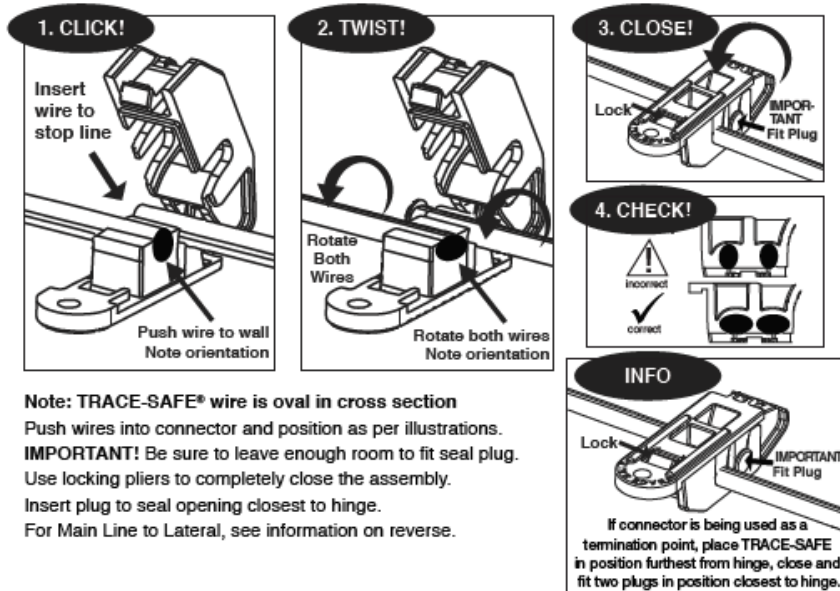


See reverse side for additional information

Item Number	Product	Color	Description	Quantity per box
66956	TS-UBC	Clear	Universal Base Connector, end to end and main to lateral works with TST and RT Trace-Safe	10
66957	TS-ULC	Clear	Universal Locate Connector, end to end and main to lateral works with TST and RT Trace-Safe	10

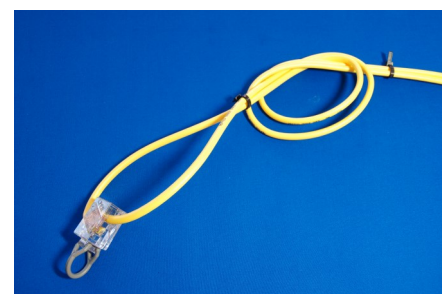
TRACE-SAFE® Universal Connector - 66956

In-Line Butt Splice instructions.



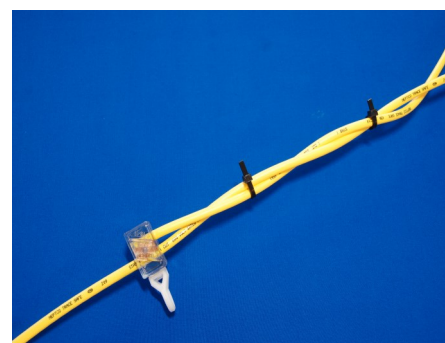
Recommended strain

End to end splice



Recommended strain relief

Service lateral

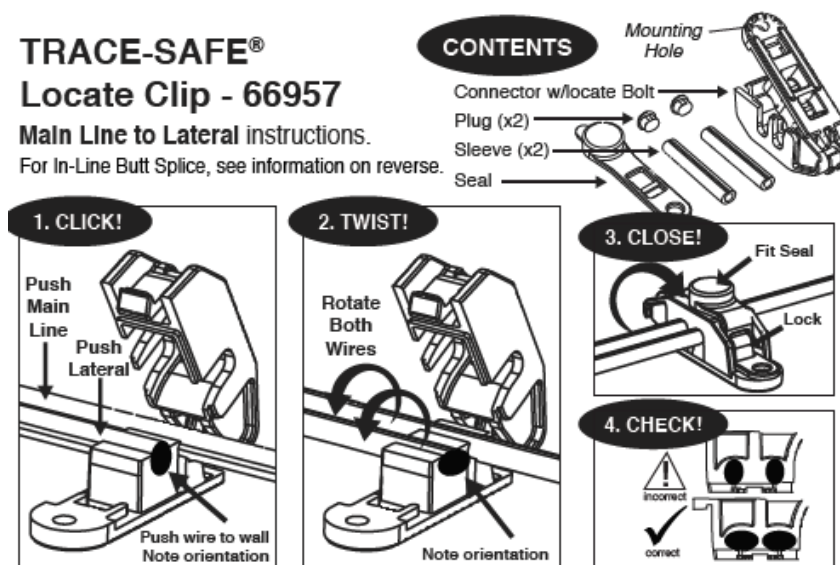


TRACE-SAFE®

Locate Clip - 66957

Main Line to Lateral instructions.

For In-Line Butt Splice, see information on reverse.



TRACE-SAFE® Water Blocking Tracer Wire is intended to promote detection of underground cables and utilities. As with any conductor, it has the potential to transfer electrical energy. Do not pull, strap, bind or lift items with this product.

NEPTCO only warrants that its products will work in a manner consistent with the capabilities described. This information corresponds to our current knowledge of the subject and it is not intended to substitute for any testing you may need to conduct to determine suitability of our product for your particular purpose. Except for the express warranty and limited remedies described herein, NEPTCO DISCLAIMS ALL OTHER WARRANTIES, EXPRESSED OR IMPLIED, INCLUDING THE IMPLIED WARRANTY OF MERCHANTABILITY AND THE IMPLIED WARRANTY OF FITNESS FOR A PARTICULAR PURPOSE. The Buyer's remedies under the limited warranty stated above shall be limited to a return of the purchase price of the product. NEPTCO and its authorized agents shall not be liable for any other damages including consequential damages, incurred in connection with the use or performance of the product. This warranty shall be void if the product has been tampered with or improperly used. NEPTCO reserves the right to improve, enhance, and / or modify the features and specifications of these products.