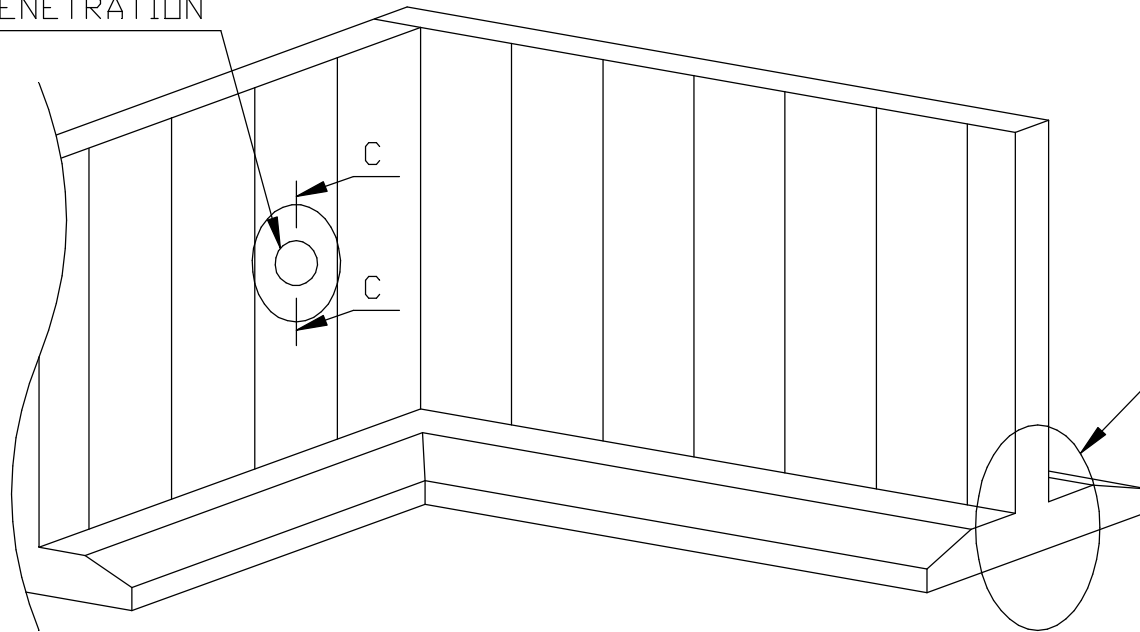




PIPE PENETRATION



REFER TO ABUTMENT WALL  
WATERPROOFING DETAIL

NOTE:

1. Refer to "Royston® Waterproofing Membrane Installation Guidelines" and Technical Data Sheet for instructions
2. Waterproofing membrane can be installed horizontally with 3" minimum overlap

CREATION DATE 8/2/2022	 		
CHECKED DATE 8/2/2022	TITLE TYPICAL WALL WATERPROOFING WITH ROYSTON ARCHITECTURAL MEMBRANE		
DRAWN MCCALL	SIZE B	DWG NO RM-8	REV
SCALE NONE		SHEET 1 OF 1	